



2020 Year in Review

Celebrating 15 years of impact



CARE IN ACTION MINNESOTA

Partnering to Prevent Child Maltreatment

651-7476370

|

www.careinactionmn.org

|

info@careinactionmn.org

2020 ANNUAL REPORT

Dear friends,

It's hard to believe it's been 15 years since we started Care in Action Minnesota. A lot has changed in that time and yet much has remained the same. Our developing organizational identity continues to be fueled by the tenacity of our supporters. Without your dedicated support over the past year, our work would not be possible. In the middle of the pandemic, you stepped forward more than ever to touch lives and help people in need. We are continually inspired by your commitment.

Whether you are a donor, a volunteer, or a caring person concerned about the plight of children and families impacted by child maltreatment, we are very grateful for your generosity of time, funds, and spirit.

WHAT HAS CHANGED

We have experienced tremendous growth since Care in Action Minnesota's early days, in geographic area served and the numbers of foster youth, children & families we have been able to support. You have helped us grow our impact, from what began with a small church in one county to now serving six counties across Minnesota with several local business partners, compassionate individuals, community, volunteer and faith-based groups investing in the lives of the most vulnerable in our community.

WHAT HAS STAYED THE SAME

Our commitment to offering programming impacting children who have experienced abuse or neglect, strengthen families, connect communities, and prevent childhood maltreatment. Our commitment to collaborating with county and community partners. Our role to partner with families to assess child safety and family needs, encourage families to develop their own solutions to their challenges, and identify supportive resources to help care for and protect their children.

The impact thus far has been tremendous. We have kept families together. We have made reunification possible. We have helped complete the final steps for adoption. We have helped families fleeing abuse. We have helped families secure permanent housing after years of experiencing chronic homelessness. We have helped children and families heal. We have raised awareness. We have prevented child abuse.

Unfortunately, families still need our help, and the systems designed to help them still struggle with disparities. We remain committed to addressing these disparities. And above all, we remain committed to our vision of a world with no family violence, where all children, youth, and families can operate at their full potential and have the resources and skills they need to live with hope and dignity.

LOOKING FORWARD

While the pandemic created an array of unforeseen circumstances this past year, CIAM was poised to quickly and directly deploy resources in response to immediate emergency needs in our community. We were able to do this thanks to the critical investment we received from the Sauer Family Foundation at the very start of 2020.

We are honoured and grateful for the Sauer Family Foundation continued support in 2021 of a \$10,000 grant. The mission of the Sauer Family Foundation is to invest in strengthening the well-being of children so they thrive in their families and communities.



With the continued generous support of the Sauer Family Foundation, our positioning to address the growing issues surrounding childhood maltreatment is reinforced and strengthened.

THE ROAD AHEAD



In the years to come, we commit to tackle some of the more intractable problems facing families. We will engage in research and best practices for raising awareness and action around child maltreatment, strengthening cross-sector partnerships to help children and families, and engaging the community in efforts to support and strengthen families before abuse occurs.

As we continue to partner with faith communities, foundations, child protection agencies, and a host of other organizations, we're building a movement to change the way we care for the children in our community.

The past twelve months have been challenging and transformative for all of us at Care in Action Minnesota. We are proud of everything we have been able to accomplish alongside our supporters, but we are constantly reminded that our work is not done, and it will not be done until all children are safe and all families are supported. We look to you, our stakeholders, to provide your insights, guidance and support as we embark on the next 15 years.

Pete Singer,
Founder & Executive Director

OUR IMPACT

In 2020, we celebrated 15 years of surrounding families in crisis with a caring, compassionate community. Below is just a small snapshot of our impact in 2020.

Provided direct support to over 100 foster youth, children & families

10 cases helped prevent or end family homelessness

6 cases supported a family fleeing domestic/family violence

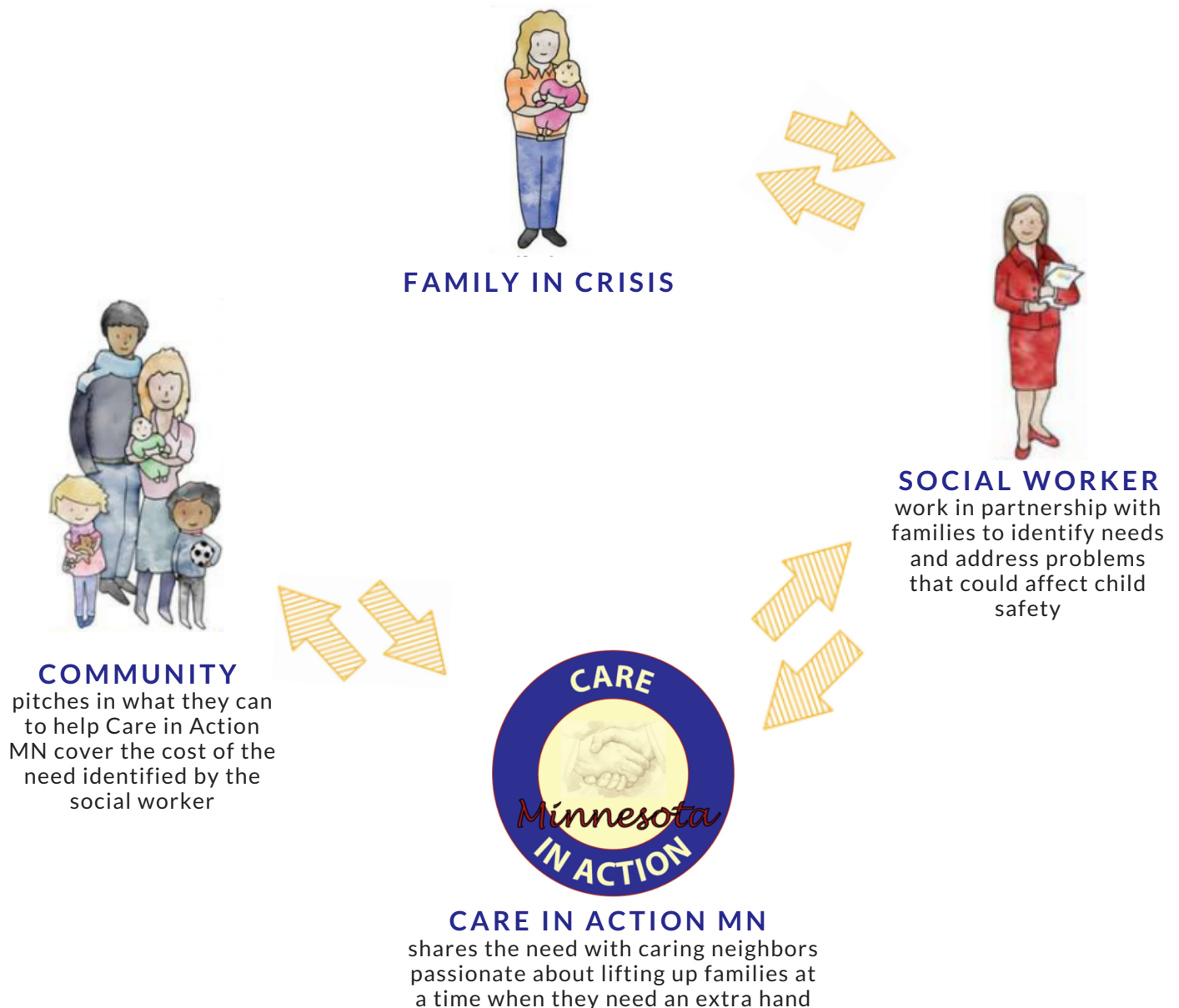
5 provided crucial support in finalizing the reunification process

9 cases helped provide/make accessible mental or physical health-related services



THE CARE IN ACTION MINNESOTA MODEL

Whether it's support with groceries or help with rent, our impact areas, collaborative structure and various programs fit together and contribute to helping families and children find more stable and self-sufficient lives. Parents love their children and want them to be safe. Sometimes parents need help to make that happen. Care in Action Minnesota can provide this help.



THIS MODEL AS RACIAL EQUITY STRATEGY

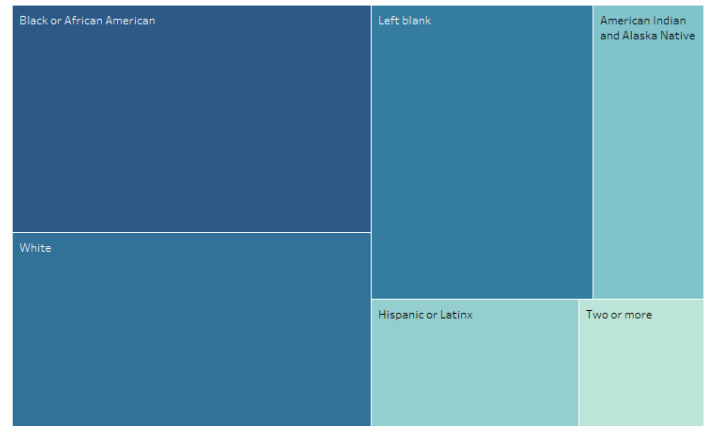
Provides a key strategy for combating racial disparities in child welfare and promoting social justice. Our solution-focused, family-led model enables us to provide culturally appropriate, trauma-responsive, relationship based services that help children thrive. This model is a collaborative, unintrusive response for families that does not require an investigation, and rather focuses on creating a community system of care that can address & minimize harm.

Thank you so much
for blessing my
family. It means
so much to us know-
ing we're still
thought of. You
blessed us in
so many ways
we greatly
appreciate
you.

WHERE & WHO WE SERVE



WASHINGTON CO.	44%
HENNEPIN CO.	31%
RAMSEY CO.	21%
FILMORE CO.	2%
WINONA CO.	2%



AFRICAN AMERICAN OR BLACK	36%
AMERICAN INDIAN AND ALASKA NATIVE	14%
WHITE	31%
TWO OR MORE RACES	7%
LEFT BLANK	28%
HISPANIC OR LATINX	12%

CHILDREN & FAMILIES RECEIVING SUPPORT	81%
FOSTER CARE YOUTH RECEIVING SUPPORT	19%



A THANK YOU MESSAGE FROM A SOCIAL WORKER

"You will never know how much your financial support has contributed to the housing outcome for a family that has been chronically homeless off and on for over 5 years. By finding and obtaining permanent housing for a mother with severe mental health concerns and her child, you have assisted in establishing permanency in a safe community; family stability for mom and child; and the opportunity for Mom to address her mental health concerns consistently. Very grateful for your assistance."

FINANCIAL STEWARDSHIP

You have helped to make a difference in people's lives. Because of your generosity, we've been able to keep more kids safe and more families intact.

DONOR DATA

- 162 gifts
- Average Gift: \$235.95
- 36 new donors since 2019
- Total \$ value amount of direct support going straight to families & foster youth (not including holiday gifts): \$16,623
- 100% of donations straight to families



STATEMENT OF ACTIVITIES

Summary of Support and Revenue

Community Foundations.....	\$14,000
Individuals Donations.....	\$14,338
Corporate Contributions.....	\$350
AmazonSmiles	\$105
Total support/revenue	\$28,793

Summary of Expenses

Program expenses	\$10,951
Management/General	\$10,000
Fundraising	\$100
Total annual expenses	\$21,051

COMMUNITY PARTNERS & SUPPORTER

Families thrive with the support of communities, and the organizations in those communities that listen to, understand, and meet their unique needs. These networks can include everything from neighbors, friends, and relatives, to more structured social supports.

We're grateful to our Adopt-A-Social Worker partner organizations & our other community partners listed below in alphabetical order.

- Agape Church, St. Louis Park
- Alley Church, Cottage Grove
- Christ Lutheran Church, Preston
- Crossroads Church, Woodbury
- Elim Lutheran Church, Scandia
- Empower Survivors, Stillwater
- Goodview Trinity Lutheran Church, Winona
- Hope Church, Oakdale
- River Valley Girl Scouts
- Zero Abuse Project

SPONSORS



Thank You to all of our donors, big and small, your support is an investment in the lives of the most vulnerable children, youth and families in our community. A special acknowledgement to some of our most dedicated donors that gave in 2020 and the years before. Your continued support makes our work possible!

- Jennifer Holmberg
- Al and Linda Miller
- Linda Novitt
- David Bernard
- Sara Avelsgaard
- Anne Gattman
- Keith and Nicole Treague
- Andrea Miller
- Linda and Paul Dosser
- Archie Eliason
- Miriam and Nate Bawden
- Galen Call
- Andrew Morcomb
- Dan Haupt

2020 BOARD OF DIRECTORS

- Merrill Zieman
- Chris Singer
- Andrew Morcomb
- Kelis Houston
- Mark Mellana
- Andrew Groven

